

EDMONTON STAMP CLUB

BULLETIN

Volume 105, Number 1 January 2016 ISSN: 0046-1318

Mailing address: P.O. Box 399, Edmonton AB T5J 2J6

Web site: <http://www.edmontonstampclub.com>



WINTER RECREATION 1957

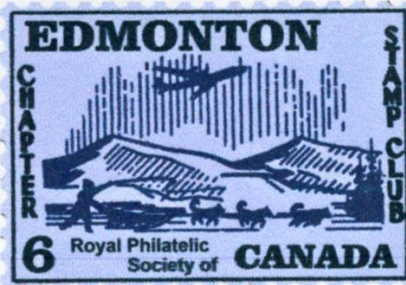


Regular meetings:

St. Joseph High School Cafeteria, 10830 - 109 Street, 6:00 pm

January 11 & 25

February 8 & 22



The Edmonton Stamp Club dates back to 1912. The Club is Life Chapter #6 of the Royal Philatelic Society of Canada and Chapter #680 of the American Philatelic Society. **The editor welcomes communications of all kinds—letters, comments and articles. Deadline, 15th day of each**

month. These may be forwarded to Fred Tauber, Edmonton Stamp Club, Box 399, Edmonton, Alberta, T5J 2J6 or email to fxtauber@shaw.ca

2015 - 2016 Board of Directors, etc.

Area code 780-

Schutte, Robert	President	989-1260	rschutte@telusplanet.net
Dykstra, Ed	Vice President	421-0930	eddykstra@shaw.ca
Barnes, Richard	Vice President	488-5288	rtbarnes@shaw.ca
Stein, Warren	Secretary	463-9881	warren.stein@worleyparsons.com
Lockau, Jim	Treasurer	467-4825	jimlockau@gmail.com
Tauber, Fred	Membership	469-3034	fxtauber@shaw.ca
			(Webmaster-edmontonstampclub.com & Editor-Bulletin)
Kuester, Peter	Past President	451-0520	peju@shaw.ca
	Director (Circuits Manager)		
Ellis, David	Director	457-7491	dwellis@interbaun.com
Kluchky, Ken	Director	472-2504	kluchky@shaw.ca
Pacey, Jeff	Director	989-3491	jpacey@telus.net
Spencer, Keith	Director	437-1787	keithrspencer41@gmail.com
			(Past President & NWFSC, RPSC liaison)
Hetke, Dave	Director	909-3974	davehetke@yahoo.com
Sheena, Arif	Director	951-5707	arifsheena@hotmail.com
Verrier, Rod	Director	489-7506	vcorp1@telus.net
Wissink, Barend	Director	922-5019	wissink@mcsnet.ca
Fast, Malcom	Director	966-2812	mfast@beyondnumbers.ca
Bates, Pat	Archivist	434-9090	patbates@shaw.ca
Piercey, David	BNAPS liaison	437-2771	dpiercey@telus.net
Carol Warren	Coordinator Summer Auction	962-1234	carwarren@shaw.ca

View the Bulletin in **colour** – edmontonstampclub.com
(click ESC Bulletin)

Messages

Greetings Philatelists,

The last meeting of the year was our Christmas party that was, as expected, well attended as stamp collectors seem to be a hungry bunch. Trays of sandwiches, mixed trays with cheese and sausages, and three large cakes were provided and donated by Rod Verrier while fruitcake and mandarin oranges came from the Schutte family. The party ran smoothly thanks to the organizational talent and hard work of Margot Schutte and Judy Kuester.

A look back at 2015 seems to be in order at this time. Attendance at club meetings has been steady and high. The participation in auctions whether Estate, Silent or General has been profitable for the sellers as well as the club. However, the auction rules appear to require adjustments and a subcommittee of the board is now working on that. The Spring show was well attended, and the Central Lions Centre proved to be an excellent venue for this event. Membership in the club is also steady, with the number of new members pretty well matching the loss of members due to old age and its consequences.

On the administrative front: the club managed to get reinstated by the societies branch of the Government of Alberta. Our budget is getting under control. Not that we need to make money, we are after all a not for profit society, but we cannot continue running up an appreciable deficit as that would be the end of the club in about 5 years. A new set of bylaws, clarifying roles and eliminating a few internal inconsistencies, was adopted by the membership in September. These efforts have put the club on a solid footing and as a few board members remarked to me: we can now talk about stamps again, much more interesting.

Wishing you all a happy, healthy and prosperous 2016!

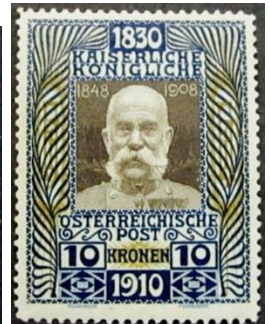
President
Rob Schutte





Guy Woodward passed on December 2, 2015 (2176) club member since 2001. The stamp club members send condolences to his wife Audrey, grandson Jessie and family.

Garry Hamilton, passed on April 7th 2015. A life member who joined in 1986 (1785). The stamp club members send belated condolences to his wife, Sharon and family.



AUSTRIA-142_MH, (15 bids) \$48.07 AUSTRIA-144_MH, (21 bids) \$69.24
 AUSTRIA-143_MH, (18 bids) \$89.56
 (Ebay)

Romanian Cinderella's

I have had sitting on my desk a number of odd Romanian stamps. Today I had a chance to look at them. These are Cold War parodies of then current Romanian stamps. I assumed they were part of the Air America anti-Soviet style propaganda having something to do with the Romanian National Committee and the Assembly of Captive European Nations but could not find anything specific about their involvement with postal style propaganda. A fellow collector suggested that when I had time to look at the Witt Collection site on the internet. There I found information on the Romanian Government – in – Exile also known as the Romanian Refugee Committee based in Spain during the 1950's. The following three stamps, Fig RO 1-3 are examples of their work. Many of the Romanian – in - Exile stamp sets included souvenir sheets. After many months or a year I now know what I am now putting into my junk box.



Illustrated permits

Earle Covert

These illustrated permits are the latest collecting rage. This is partial list from Earle Covert, so you can get an idea of the type and diversity of these items. KS

ILLUSTRATED PERMITS to Sept 30, 2015 Not the actual size nor to scale



achieve.mb.ca 2015 – DS



Aeroplan - EG & ELC



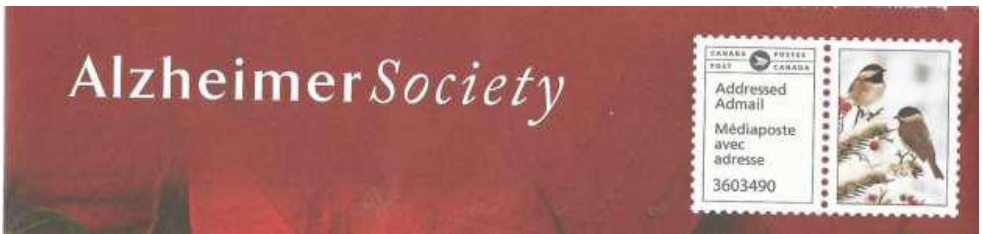
AIR MILES – VC



Alberta Cancer Foundation - VC, ELC



AIR MILES with RPG / PRG and QR code Sept 2105 CE & ELC



Alzheimer's Society – DS



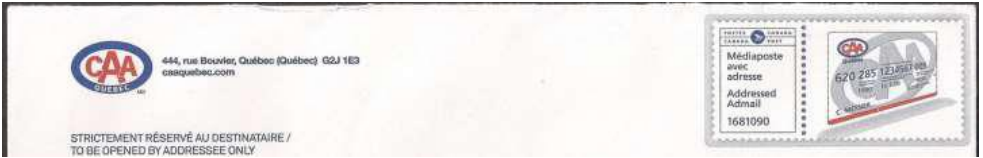
Billy Graham Evangelistic Association of Canada - 2014 JR & ELC



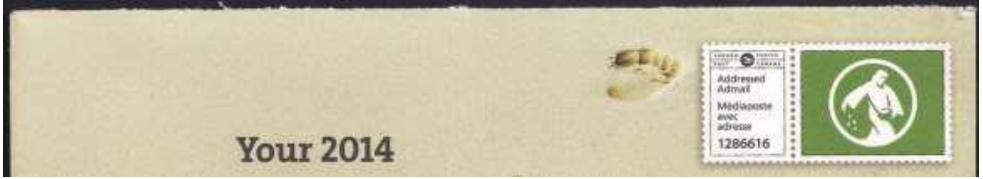
BMO Insurance BT



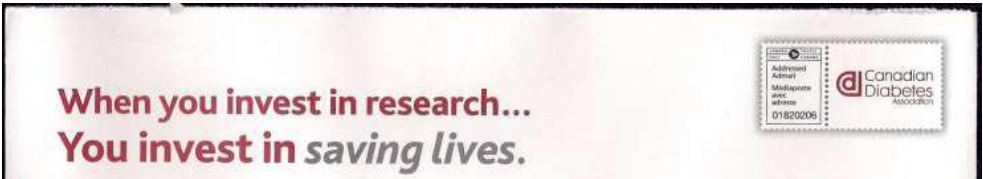
Canada Post MS & ELC



CAA QUEBEC – Aug 2015 PG & CR & ELC



Canadian Bible Society – 2015 – green background around sower PMcC, JR & ELC



Canadian Diabetes Association – no border around “picture” ELC



Canadian Geographic – SPECIAL OFFER! - brown bear KS, PMacD & ELC



Canadian History (magazine) May 2015 RMcG, Paul Sneyd, MS &ELC



Canadian Red Cross 2015 VC



Celebrity Cruises KS & ELC



Chrysler DS



Edmonton Eskimos KS & ELC

To be continued.....

Advertisement Rates

Per issue: Full page - \$30.00

Half page – \$17.50

One quarter page – \$10.00

10 issue discount – 20%

5 issue discount – 10%

* Desired graphics must be supplied

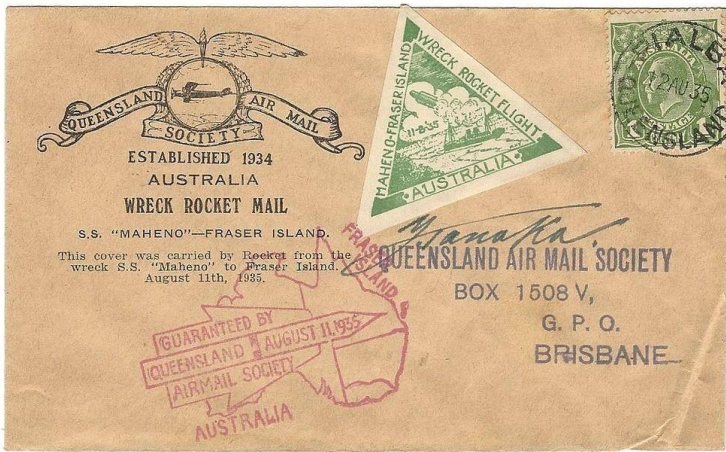
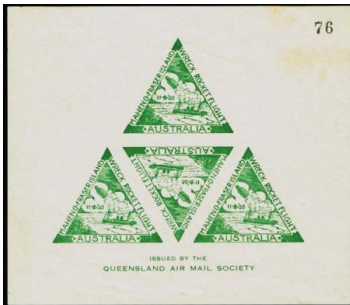
Contact Fred Tauber at

fxtauber@shaw.ca

** Now Linked on our Web Site

'Maheno-Fraser Island Wreck'

SS Maheno was an ocean liner belonging to the Union Company of New Zealand that operated in the Tasman Sea, crossing between New Zealand and Australia, from 1905 until 1935. Aug 11, 1935 the "Wreck Rocket Mail Covers" were sent to Fraser Island from the S.S. Maheno with red or green triangle labels tied by purple dated cachet. Some covers signed by Y. Tanaka, the Master of the Maheno, adds a substantial premium. A total of 750 covers were carried. FT



Meeting Dates

The Edmonton Stamp Club meets Mondays at 6:30 p.m. in the cafeteria of St. Joseph High School, 10830 - 109 Street. Park to the north of the school and use the main entrance at the south-east corner of the school. For information about the club call 780-451-0420 or 780-437-1787.

2016

January 11 & 25
February 8 & 22
March 7 & 21

2016 Spring National April 2 & 3, 2016

April 4 & 18
May 2, 16 & 30
June 13 (ELECTIONS)

From time to time. All BNAPSers welcome. For information contact David Piercey at 780-437-2771 or Steven Friedenthal at 780-458-1233.

Dale Speirs, Calgary, Alberta

Just received the latest issue of your bulletin and was concerned to see the fake email published as fact, claiming a difference in pricing. This hoax has been circulating for years and was exposed by Canada Post on its Website.

Canada Post responded on their web site, **Announcements**

Latest news releases, announcements and alerts

An email is being circulated which suggests that prices are not consistent between post offices. Posted on Nov. 18, 2015. Here's an [email](#) being circulated which suggests that prices are not consistent between post offices.

Let's clear this up: This email is false. Here's why: Postage rates are calculated by an automated retail point of sale system in all post offices, whether they are corporately owned or franchises. Parcel shipping costs are based on the size and the weight of each parcel. Each side of a parcel is measured by the clerk and weighed on an electronic scale – with the data entered into the electronic system. No alteration is possible. Franchise post offices follow the same rules as corporate post offices and Canada Post is responsible for ensuring compliance.

From The Postal History Corner Website

<http://postalhistorycorner.blogspot.ca>

Part 6

Effective Dates	Letter Rate	War Tax (On 1 st oz. only)	Total
April 15, 1915 - March 31, 1943	1 cent per oz.	1 cent	2 cents 1st oz.
April 1, 1943 - June 30, 1951	1 cent per oz.	2 cents	3 cents 1st oz.

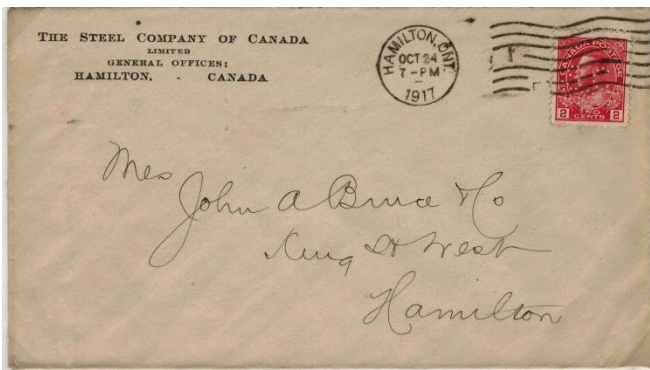
War Tax Period: 1915 -1951

In order to increase revenues to aid in the war effort, the Canadian Parliament passed the *Special War Revenue Act* which came into effect on April 15, 1915. Among its many provisions was the imposition of a 1 cent tax on each letter and post card mailed in Canada for delivery in Canada, the United States, Great Britain and British possessions and wherever the 2 cent letter rate applied. The 1 cent tax was added to the first weight letter steps only.

The local rate letter remained at 1 cent per ounce but with a 1 cent tax to be prepaid on the first ounce. Although the 1 cent War Tax was temporarily removed on forward letters from 1926 to 1931, the tax was not removed on local letters. In 1943, the War Tax was increased to 2 cents on the first weight step which remained in effect until 1951 when the War Tax was incorporated into the postal rate.

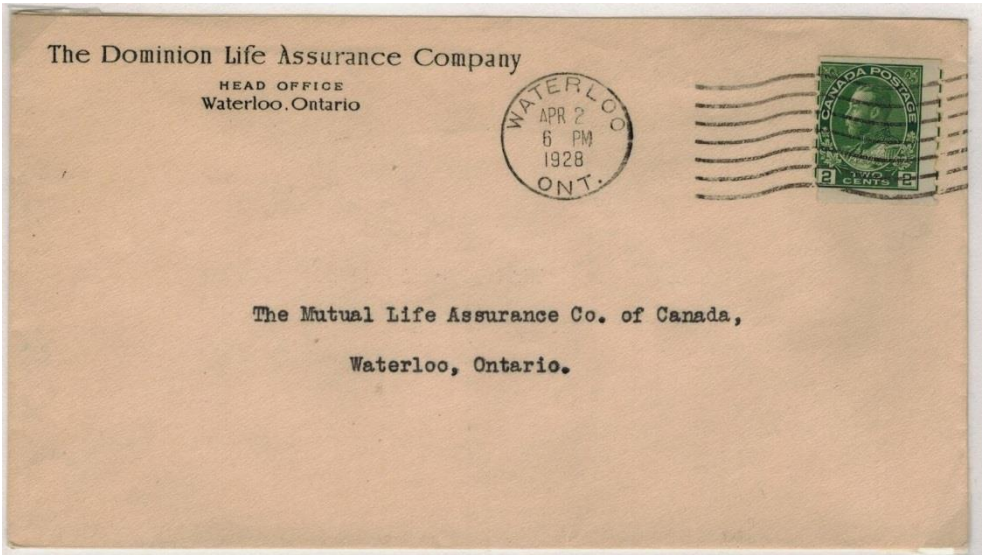
April 15, 1915 - March 31, 1943

2 cents was to be prepaid on a one ounce local letter : 1 cent local letter rate + 1 cent War Tax. The two ounce rate was 3 cents : 2 cents local letter rate for two ounces + 1 cent War Tax. The War Tax could be paid with war tax stamps or with regular postage stamps.



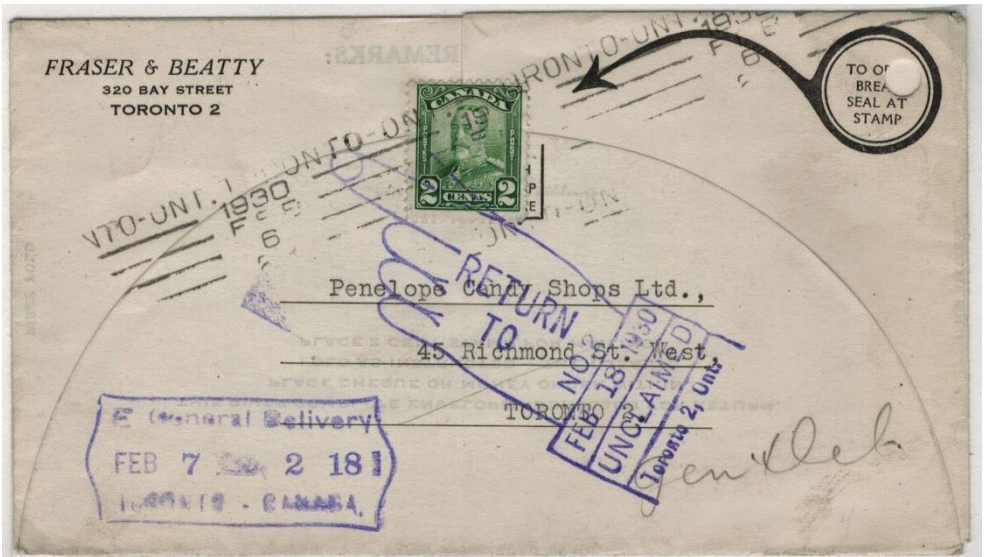
Hamilton local letter, October 24, 1917.

2 cents (includes 1 cent War Tax)

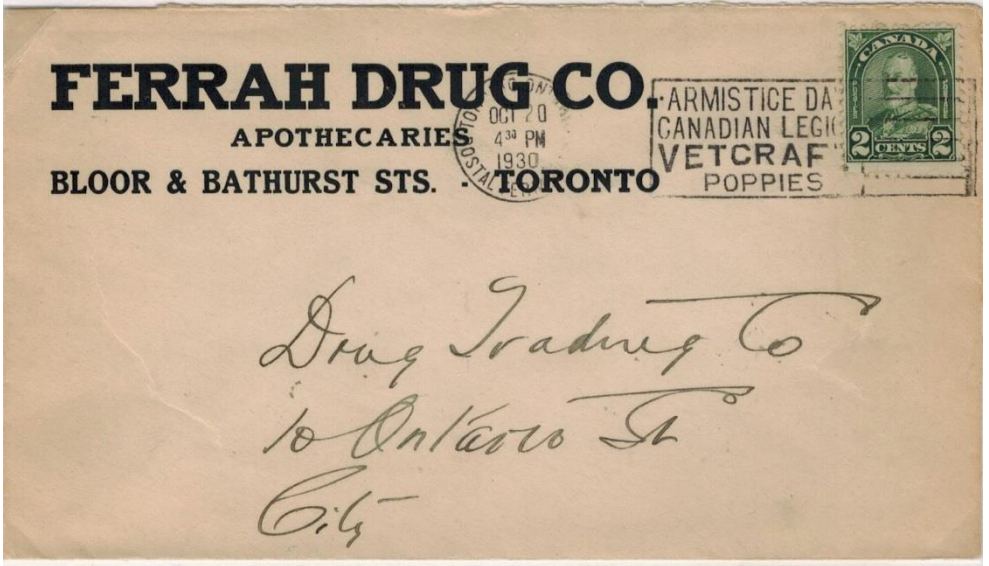


Waterloo local letter, October 24, 1917
2 cents (includes 1 cent War Tax)

The 1 cent War Tax on forward letters was removed on July 1, 1926. From 1926 to 1931, the 1st weight local and forward rates were the same: 2 cents.



Toronto local letter, February 6, 1930
2 cents (includes 1 cent War Tax)



Toronto local letter, October 20, 1930
2 cents (includes 1 cent War Tax)



Winnipeg local letter, December 24, 1931
2 cents (includes 1 cent War Tax)

to be continued.....

The Stamp Gallery

Featuring Canada, British Colonies, Europe
And the Rest Of The World



Ihor Rudyk

14027-101 Ave.
Edmonton, Alberta
T5N 0K2

open: Thursday to Saturday
10am to 5 pm
Phone: 780-760-6078

email: ivrudyk@shaw.ca

**Over 500 Red Boxes
Half Catalogue Or Less**



CAN_NS-1_U, strip 3, (14 bids) \$352



CAN_NFLD-C2_MH, (28 bids) \$165



CAN_NFLD-C3_MHR, (14 bids) \$112

(Ebay)

DEVENEY STAMPS



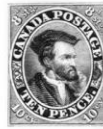
CANADA'S LEADING STAMP APPROVAL DEALER

CONTACT US, OR SIGN UP FOR APPROVALS ON OUR WEBSITE TODAY...

SHOP FROM HOME!

SPECIALIZING IN:

- *CANADIAN REVENUES
- *CANADIAN PRECANCELS
- *EARLY CANADIAN STAMPS
- *VARIETIES & RE-ENTRIES
- *PROVINCES



TOLL FREE: 1-888-232-0282
EMAIL: DEVENEYSTAMPS@GMAIL.COM
WWW.DEVENEYSTAMPS.COM

ebay



"The best kept secret in Canadian Stamps"



CAN-CL41_MNH, (22 bids) \$29



CAN-CL48_MHR, (12 bids) \$24



CAN-CL51_MNH, (22 bids) \$31

(EBay)

EDMONTON STAMP CLUB 2016 SPRING NATIONAL STAMP SHOW



April 2-3

Saturday 10-5pm, Sunday 10-4pm

Central Lion's Recreational Centre

113 St & 111 Ave

(Large Gym – North end)

Stamp Dealers from across Western Canada
Stamp Circuit Books, Door Prizes, Junior Stamp Table
National-level Competitive Stamp Exhibits. Exhibits
chairperson: Kelly Luisz-Moser luiszmoser@gmail.com



Edmonton Archives EAA-1-14

The theme of this year's show is:

Edmonton: Gateway to the North

For further information: www.edmontonstampclub.com

Up Coming Events

Courtesy Canadian Stamp News

January 30, 2016

Winfield Stamp Show & Bourse

Senior Activity Centre, 9830 Woods Lake Road, Winfield, BC, V4V 1S7. Hours: 10 a.m. to 2 p.m. Free admission. Stamp auction, philatelic displays. Okanagan Mainline Philatelic Association

Phone: 250-542-4127

Email: rhein2@telus.net

April 2 & 3, 2016

2016 Spring National Stamp Show "Edmonton-Gateway to the North"

Central Lion's Recreational Centre, 11113 - 113 St, Edmonton, AB
Hosted by the Edmonton Stamp Club. Hours: Sat. 10 a.m. to 5 p.m.; Sun. 10 a.m. to 4 p.m. Stamp dealers from across Canada. Stamp circuit books, door prize draw, junior stamp table, national-level stamp exhibits (WSP). Free admission. Free stamp evaluations.

Email: eddykstra@shaw.ca

Web: edmontonstampclub.com

August 19 to 21, 2016

Royal *2016* Royale "Are You One Of Kitchener's Own?"

Kitchener, Ontario. Waterloo Memorial Recreation Complex, 101 Father David Bauer Drive, Waterloo Ontario.

88th Convention of The Royal Philatelic Society of Canada.

phone: 800-361-6631 or 519-746-4270

Email: royal2016royale@gmail.com

Web: <http://www.kwstampclub.org>

September 9 to 11, 2016

Seattle Philatelic Exhibition (SEAPEX) 2016

Tukwila Community Center, 12424-42 Avenue South, Tukwila, Washington. USA

Web: seapexshow.org

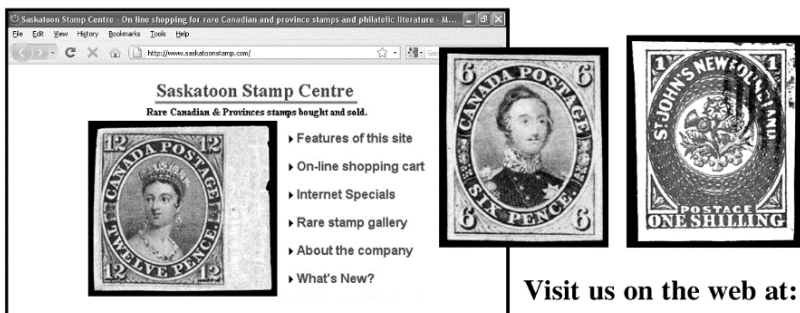
MJR POSTCARDS & COVERS / CANADA COVERS AND STAMPS**COMBINED WEBSITE
GRAND OPENING****MJR POSTCARDS & COVERS
JOHN BUCCI****mjrcards@telusplanet.net**View MJR's stock by appointment
780-456-7095 (Edmonton)
1 (877) 456-7095**www.mjrcardsandcovers.ca
WEBMASTER****LEANNE KLASSEN****leannemklassen@gmail.com
1-306-241-6315****CANADA COVERS AND STAMPS
HAL KELLETT****hkstampsandcovers@shaw.ca
1-306-374-4282****"SPECIALIZING IN CANADIAN
MATERIAL"
"EXPERIENCED SELLER"
"SPECIALS ON OUR WEBSITE EVERY
MONTH****CANADIAN STAMPS – COLLECTIONS – POSTAL HISTORY****POSTAL HISTORY**TERRITORIALS
ASSINIBOIA
EARLY SMALL TOWNS
SPLIT RINGS
RATES – REGISTERED
DEAD LETTER OFFICES
FLAGS – DUPLEXES
AND MORE!**STAMPS**

MINT – USED - VARIETIES

COVERSMILITARY, ADVERTISING
QUEEN VICTORIAS
EARLY FDC'S
SEMI OFFICIAL AIR MAIL
SPECIAL EVENTS/EXHIBITIONS
SPECIAL DELIVERY
BULK LOTS
AND MUCH, MUCH MORE!**POSTCARDS**REAL PHOTOS
SMALL TOWN VIEWS
RAILROAD DEPOTS
CALGARY STAMPEDE
AND MORE!**WWW.mjrcardsandcovers.ca****BUYING WHAT WE ARE SELLING
CONSIGNMENT AN OPTION****mjrcardsandcovers.ca**

CANADA • BNA

Choice Early Classics to Modern Varieties



Saskatoon Stamp Centre
Rare Canadian & Provinces stamps bought and sold.

- ▶ Features of this site
- ▶ On-line shopping cart
- ▶ Internet Specials
- ▶ Rare stamp gallery
- ▶ About the company
- ▶ What's New?

Visit us on the web at:

www.saskatoonstamp.com

Our Website offers a secure on-line shopping cart where you can view & order from our large stock of Canadian & BNA stamps & Philatelic Literature. You can also start a Want List, view Recent Catalogues, browse through our Rare Stamps Gallery and more.



WANTED CANADIAN ERRORS

CANADIAN ERRORS — BOUGHT * SOLD * TRADED

- ❖ IMPERFORATES ❖ MISSING COLOURS ❖ INVERTS ❖ MISPERFS ❖
- ❖ COLOUR SHIFTS ❖ PRINTED ON GUM ❖ BETTER VARIETIES ❖



FREE ON REQUEST:

Our current private treaty catalogue of Canadian and British North American Stamps. Call, E-mail or Write



Internationally Recognized as a Leading Dealer in Canadian Errors and Varieties

SASKATOON STAMP CENTRE



PO Box 1870, Saskatoon, SK, S7K 3S2, Canada
Call TOLL FREE 1-800-205-8814 in North America
or Phone: (306) 931-6633 or Email: ssc@saskatoonstamp.com

