

**EDMONTON STAMP CLUB**

# BULLETIN

Volume 115, Number 3, March 2026

ISSN: 0046-1318

Mailing address: P.O. Box 399, Edmonton AB T5J 2J6

Website: <http://www.edmontonstampclub.ca>

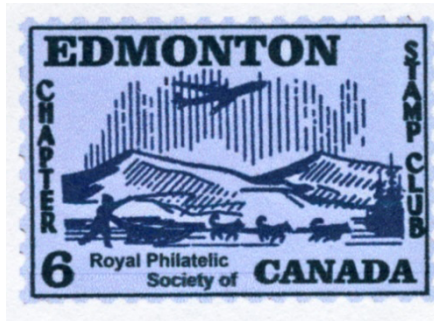


Collectors from Paul Kane High and Junior High check out the kiloware  
at our meeting on 9 February

Regular meetings

St. Joseph High School Cafeteria, 10830 - 109 Street, 6:00 pm

**Check Page 20 for meeting dates**



The Edmonton Stamp Club dates back to 1912. The Club is Life Chapter #6 of the Royal Philatelic Society of Canada and Chapter #680 of the American Philatelic Society. **The editor welcomes communications of all kinds – letters, comments, and articles.**

These may be forwarded to John-

Paul Himka, Edmonton Stamp Club, Box 399, Edmonton, Alberta, T5J 2J6, or click “contact” on our website ([edmontonstampclub.ca](http://edmontonstampclub.ca)) or email to [jhimka@ualberta.ca](mailto:jhimka@ualberta.ca).

The Edmonton Stamp Club respectfully acknowledges that we are located on the traditional territory of the First Nations, the Inuit, and the Métis peoples. We recognize the land as an act of reconciliation and gratitude to those whose territory we reside on or are visiting.

## 2025 - 2026 Board of Directors

Area code 780 (unless otherwise noted)

Pattison, Dave	President	914-7742	pattisond(at)ymail.com
Dykstra, Ed	Vice-President	587-341-0804	eddykstra(at)shaw.ca
Heibert, Brian	Treasurer	977-7337	bdh.ent00(at)gmail.com
Himka, John-Paul	Secretary, <i>Bulletin</i> Editor	695-7903	jhimka(at)ualberta.ca
Tauber, Fred	Membership	469-3034	fxtauber(at)shaw.ca
Lockau, Jim	Director	467-4825	russiancollection1975(at)gmail.com
Spencer, Keith	Director	437-1787	keithrspencer41(at)gmail.com
	(NWFSC, RPSC liaison)		
Pacey, Jeff	Director	721-2877	jpacey(at)telus.net
Hetke, Dave	Director	909-3974	davehetke(at)yahoo.com
Friedenthal, Steven	Director	721-3669	stevenfr1(at)telus.net

---

Kuester, Peter Circuits Manager 451-0520 [peju\(at\)shaw.ca](mailto:peju(at)shaw.ca)

Advertising rate schedule: Full page \$30, half page \$18. Nonmembers, \$1.00 per line up to 5 lines. Ten issue discount 20%. Five issue discount 10%. Members, free, up to 5 lines. Contact Fred Tauber at [fxtauber\(at\)shaw.ca](mailto:fxtauber(at)shaw.ca) or Edmonton Stamp Club by mail.

## PRESIDENT'S MESSAGE



If you're reading this and haven't been to a club meeting at St Joseph High School lately, we have some exciting education programs planned. There's always lots to learn, and if you'd like to do a presentation on a philatelic topic, we'd welcome that too.

March ESC meetings are on the 9th and 23rd. Our estate auctions have become very active. Lots of bidding and some higher-value items. Lots of valuations being done. Got an item for the silent or member auctions? Plan to arrive early. Doors open at 6 pm, and the program starts at 7:15, with live auctions circa 7:50.

Speaking of valuations, our Spring National Stamp Show on 21 and 22 March offers free valuations. We can use volunteers for show set-up on the Friday at 5:30. (I heard Ed say free pizza!) Always a popular part the show – just bring your items. \$5 show admission and Edmonton Food Bank donations encouraged.

A reminder that the Royal will be in Calgary in 2027. Let's support this event by planning your attendance, dear reader.

David V. Pattison, President

See you at the club meeting and Spring National Stamp Show.



## Hidden Topicals: An Example from Argentina

Ed Dykstra  
eddykstra(at)shaw.ca

Sometimes stamps have a few hidden details that are easily missed. Take this Argentinian stamp that was issued for the First Pan American Postal Congress in 1921, held in Buenos Aires, the capital city.



To demonstrate the coverage of the postal service, they rotated a globe 90 degrees to show the Americas. Then an allegorical figure of a woman on the stamp is holding a letter in each hand. They appear to be held at the north and south poles.

There are also a few details that can get missed without a magnifier. Just above and behind the lady's feet is a railroad train on the right and a ship on the left. Just in front of them is a power line. This stamp can be collected three times if your topical interests include maps, trains, and ships. I initially saw a simple-looking stamp, but it had more to it than I first noticed. Then there are the different issues and reissues of this stamp design. There are about sixteen different varieties, varying in value from 30¢ to \$100. Happy hunting for your own surprises!

## **Of Souvenir Sheets and Stamps and Things**

Judy Madden

headachesolvers(at)gmail.com

At a recent club meeting, I bought a rather nice souvenir sheet from Liberia. I can hear your groans and laughter. Let's face it, Liberia, Tanzania, Niger, and other countries are known for putting out stamps by the gazillion to target all sorts of collectors. It is part of the revenue streams that make these countries tick. No need to think that these stamps will ever be as valuable as the New Brunswick stamp with the picture of the postmaster, Charles Connell. According to the "First Commemoratives" article by Paula Hammond in the November 2025 issue of *The Stamp Collector*, a Connell stamp sold at auction for \$6650 in 2024. Having said that, some of the stamps produced by countries like Liberia are really nicely executed.

This souvenir sheet was quite well executed. The stamp features a CPR steam engine pulling a passenger train (an endangered species) around a curve next to a river in the winter. The sheet is actually the whole picture, including the mountains. As soon as my brother and I spotted it, we knew it was a picture taken by well known train photographer Nicholas Morant at a spot in Banff known as Morant's

curve. (As a side note, Parks Canada really needs to remove a few trees from between the viewpoint and the track.)



Believe it or not, if you collect Canadian stamps you are probably familiar with part of Morant's work, and if you collect currency you may also be familiar with his work. He took the picture featured on the 1942 munitions factory stamp, and he also took the picture of Emerald Lake featured on the back of one of Canada's \$10 bills.

All of this brings me around to a thought. At a recent meeting it was suggested that the club petition Canada Post to produce a stamp honoring aviator Wop May. If we are unsuccessful, maybe we should petition a country like Liberia to produce a stamp honouring Wop May and perhaps other Canadian flying aces. We may be more successful. As you well know, my brother was unsuccessful in convincing the Royal Mail that they had never issued a stamp with Queen Mary, the wife of King George V (aka Mary of Teck) on it, as for some reason they could not tell the difference between her, Mary Queen of Scots (aka Mary Stuart), and Bloody Mary (aka Queen Mary I of England or Mary Tudor).

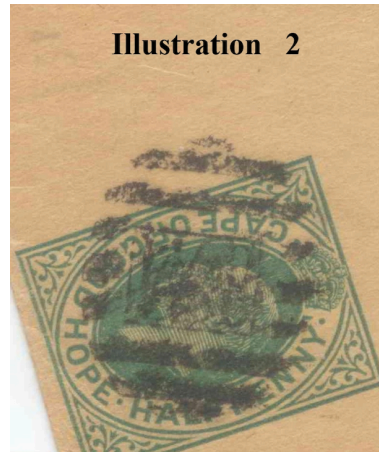
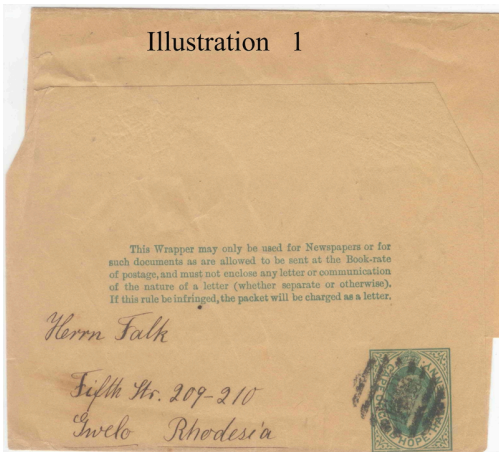
If you are interested in learning more about Nicholas Morant go to <https://www.explore.whyte.org/aboutnicholasmorant>.



## Stores, Stories, and Stamps (Number 11 in the Series "The Unexpected and Intriguing")

John Woollard  
john.woollard(at)concordia.ab.ca

A couple of years ago I bought the wrapper shown here [Illustration 1], catalogued as H&G E6.<sup>1</sup> What hooked me was the postmark [Illustration 2], a smudged strike of a Barred Oval Numerical Cancel



(for short, a BONC) from the Cape of Good Hope. Although the strike was poor, I was hoping that I would, nevertheless, be able to decipher the numeral AND that it would then fill a gap in my range of numerals. There are well over one thousand different numbers recorded, ranging from 1 to 1000 with few interruptions, then more erratically to 1420, and a very scattered few after that; since I have scarcely half these, I am always hoping to fill the numerous gaps. For many of the numerals, the exact office using them is known from proving covers, but there are also a sizeable quantity whose provenance has still to be determined, and, it should be noted, some

---

<sup>1</sup> *Higgins & Gage World Postal Stationery Catalogue*, Section 3, ed. E.G. Fladung (Higgins & Gage Inc., ~1980); out of print.

numbers were used elsewhere in southern Africa, particularly Orange River Colony, Bechuanaland, Rhodesia, and British Central Africa (becoming Nyasaland then Malawi).<sup>1</sup>

Well, having got the wrapper in my hands, frustratingly, I was unable to claim that I could unequivocally read the strike. It might be 1408, which is one of the few numbers in the 1400s on record of being used in the Cape...but is that blurred, third numeral truly a zero? It sure doesn't seem to fit. But what else could it be? Is there the hint of a diagonal line towards the top? So maybe 1448 or 1468? If so, it would be a wonderful, even unique, find, for as I say there are no known numerals from the 1400s beyond 1420. But one needs to be absolutely certain that that is correct. I fancy I also see the ghost of a lower curve: what about 1438, or 1488? Same situation: wonderful if so, but not convincing. Records do show the use of 1418, but only from Orange River Colony, and it is very hard to convince oneself that the third numeral is 1. I tried using technology: both Postmark Reveal<sup>2</sup> and ImageSleuth,<sup>3</sup> but sadly, even those did not really help. Thus, alas, my hopes were dashed, and the wrapper was on its way to the recycle bin.

But then I wondered if I could unearth anything about the recipient, a Mr. Falk, residing at 209-210, Fifth Street in Gwelo, Rhodesia.

It turns out that he is what one might call "well known." Peter Falk [Illustration 3] was born in Leutershausen, Baden-Baden, Germany,

---

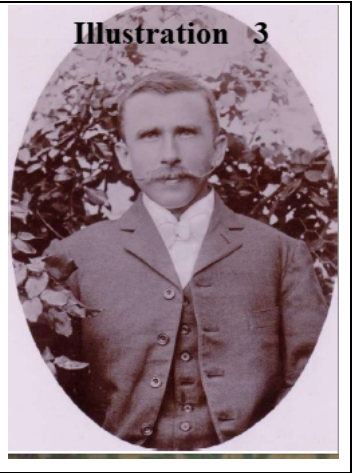
<sup>1</sup> The best resource for these numeric postmarks is D. Mordant, *The Barred Oval Numeral Cancellers of the Cape of Good Hope from 1863-1963*, 4<sup>th</sup> edition, 2025: free download from

<https://www.psgsa.org/publications>.

<sup>2</sup> <https://www.postmark-reveal.com/>.

<sup>3</sup> <https://www.thestampweb.com/imagesleuth/download>.

on 27 March 1870.<sup>1</sup> He studied horticulture at Heidelberg University, but had a taste for something other than domesticated Europe, so upon graduating, he left for Africa, arriving in Cape Town in November 1891. After a short spell of working for a tailor in Vryheid, South African Republic, in 1892 he travelled on towards the Rhodesias, where he got a position managing a trading store for the British South Africa Company in (Fort) Tuli, on



the Shashe River, right opposite the easternmost tip of what is now Botswana. While there, he came down with a severe case of malaria, so had to return to Germany to recuperate.

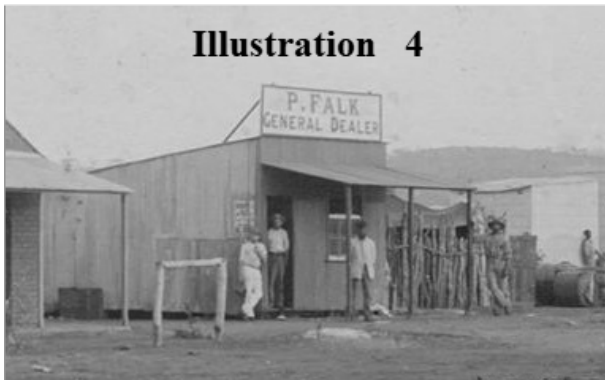
However, his love for adventure enticed him to return to Africa in 1894, when he moved farther north to Gwelo (now Gweru) approximately halfway between the two major cities of Bulawayo and Salisbury (now Harare). The settlement, whose name was derived from the Ndebele 'iKwelo' (The Steep Place) referring to the sheer banks of the nearby river, was initially a military outpost but quickly grew in significance, because coincidentally it also lay astride the "Great Dyke," a mineral-rich geological feature. So not only was it an important staging post for travel between those two other cities, but almost at once became a key supply center for prospectors and miners who were eagerly seeking gold at several locations in the vicinity. It was probably in response to this demand that Peter opened a business there as a General Dealer [Illustration 4].

Apparently he also worked as a surveyor, laying out some of the first

---

<sup>1</sup> These and some subsequent details from Hilda Klimczak, "TREES ...PLANT TREES': The Man Who Remembered Rhodes' Maxim: Recollections of Peter Falk," in *The Pioneer*, vol. 3: *Early Days in Rhodesia* (1975), 99-102.

roads in the township.<sup>1</sup> With its mild climate, the area also attracted ranchers, and by 1895 there were six hotels in the town, initially very simple structures with mud walls and thatch roofs or even just tents, but bricks and mortar quickly replaced those flimsy buildings. However, there were few other businesses, although by early 1895 there were telegraph lines reaching all the way to Salisbury and to Bulawayo.



The military incursion of Europeans into African-ruled territory was not met with enthusiasm, and in 1896 there was a major uprising by the local Ndebele people. Europeans living in isolated spots lost their lives, whilst those who learned in time of the threat quickly abandoned their farms and homes and fled to the security of larger settlements, of which Gwelo was one.

I was delighted to discover a contemporary account of the events that was finally published in 1970,<sup>2</sup> being directly taken from a typewritten document entitled “Gwelo Lager,” this in turn being a transcription of a pencil-written diary that was in the possession of Peter Falk’s daughter and which she believed had been compiled by him. A different source suggests that the document may have been typed up by a certain Mrs. L. Bagnall in consultation with

---

<sup>1</sup> <https://www.thezimbabwean.co/2014/04/happy-birthday-gweru-the-city/>.

<sup>2</sup> *Rhodesiana*, no. 22 (July 1970): 6-15.

Peter.<sup>1</sup> Either way, Peter had certainly been in Gwelo during the uprising, was given a commemorative letter honoring him as a Gwelo Pioneer,<sup>2</sup> and had been awarded a medal for his role as a Gwelo Burgher [an example of such in Illustration 5].<sup>3</sup>

Illustration 5



But one has to ask who was Mrs. Bagnall and how does she fit in so casually yet confidently? The Bagnalls were both born in Cape Colony and were among the earliest settlers in Gwelo. Harvey Bagnall was a civil engineer, who married Lavinia Cawood<sup>4</sup> in 1880 in Cradock.<sup>5</sup> He preceded her to Gwelo, with her following him in December 1895,<sup>6</sup> presumably with their four daughters. In December of 1896, after

the interruption of the uprising, he was appointed Consulting Engineer for the town, to be in charge of constructing storm water drains.<sup>7</sup> The Bagnalls were still there in 1911, when their youngest daughter got married, but moved to Johannesburg later. They were presumably good friends with Peter Falk, for I have a Union of South Africa card (H&G1<sup>8</sup>) sent rather later from Lavinia to Peter:

<sup>1</sup> <https://zimfieldguide.com/midlands/gweru-memorial-matabele-uprising-or-first-umvukela-1896>.

<sup>2</sup> Listed as arriving in 1892 in *The Pioneers Society, Roll of Present and Past Members* (1982), 5.

<sup>3</sup> From the internet: according to the preceding reference, Peter's medal and the official letter plus photographs, other personal letters, and the typescript "Gwelo Laager" were sold in South Africa in 2012 to a private collector: no images available.

<sup>4</sup> Born 9 June 1860, Cradock; died January 1952, Johannesburg.

<sup>5</sup> <https://ancestors.familysearch.org/en/LCX8-KV7/lavinia-cawood-1858-1952>.

<sup>6</sup> <https://rhodesians-worldwide.com/pioneer-women/>.

<sup>7</sup> [https://archive.org/stream/Rhodesiana/volume35\\_djvu.txt](https://archive.org/stream/Rhodesiana/volume35_djvu.txt).

<sup>8</sup> *Higgins & Gage World Postal Stationery Catalogue*, Section 16, ed. E.G. Fladung (Higgins & Gage Inc., ~1980); out of print.

postmarked Johannesburg \ 8 | 13 FEB 17 12:00 PM [Illustrations 6 & 7], so it is certainly plausible that she helped record his memories.

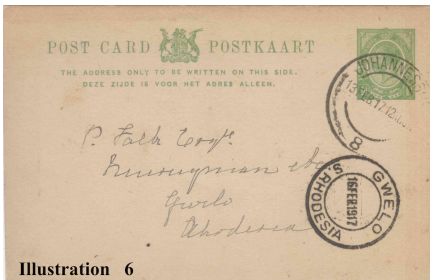


Illustration 6

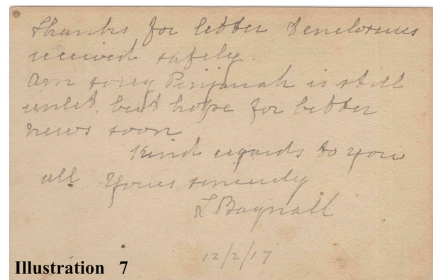


Illustration 7

But back to the account of the uprising. It does make interesting reading, being a detailed and vivid, albeit very colonial, record of the fear, excitement, disruption, and then boredom felt in the community during that period. Although this is not the place for reproducing it in full, a brief summary is in order.

News of the uprising came on 25 March 1896. The Gwelo community feared an immediate attack, which would probably have overwhelmed them, given they had poor defences, few weapons, and limited ammunition. However, they immediately organized the center of the settlement into a laager, taking over a couple of government buildings that were facing each other, and closing the sides with wagons [Illustration 8]. Everyone was to spend the nights

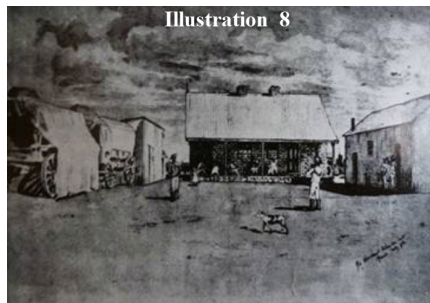


Illustration 8

in the laager, with women and children crowded into the brick buildings to sleep. Fortunately, the insurgents delayed attacking, whilst a telegraphed plea for help to Salisbury (thank goodness for

that line!) resulted in the arrival, after four days, of a small military detachment with rifles, two maxim guns, and ammunition; so from that moment on they felt secure. Nevertheless, the atmosphere during those early days was tense, as settlers from outlying camps, mines, farms, and hamlets arrived in sporadic groups, worn out and desperately seeking the security of numbers. Over the following days further Europeans arrived from remote farms, so new problems arose with where to accommodate all the newcomers, how to ensure the food supplies were distributed adequately, that clean water was available, and then ensure medical care was provided. The last was not so much to deal with wounds as to treat illness, for it was the fever season.

Although Gwelo was a small settlement, structures near the laager were demolished both to remove any cover for attackers, and to provide clear lines of fire for the guns. After some days, both telegraph lines had been cut, so communication that way was impossible, but with the passage of time, occasional, larger, armed groups of settlers brought news, supplies, and encouragement. One group even brought Dominican nuns, who took over the nursing jobs at the hospital.

There was no major frontal attack in the following weeks, hence life became both edgy and monotonous. Any accidental shot at night got everyone rushing for the laager, but too many false alarms made folk impatient. As weeks passed, disease became an increasing challenge, most cattle succumbed to rinderpest, and food supplies were running low. In August the government encouraged "refugees" in Gwelo to leave for Mafeking in convoys, with the offer of free passage, so many families departed that way. By the end of the year, the insurrection had been quelled, and settlers returned to their civilian preoccupations.

Peter continued living in Gwelo, presumably running his store. However, he was also a keen philatelist, and the message on the



In February 1906 Peter became a manager for the Anglo-African Trading company, opening a store at Clifton Mine, southeast of Belingwe. It was from there that, in September, he travelled to Umtali, in eastern Rhodesia, to be married. A detailed listing of his wedding expenses includes not only a wedding ring, but also a shirt, studs-&-links, tie, and then a bath, photo, champagne, plus a complete new tweed suit, and repairs to a portmanteau.<sup>1</sup> The total was over £49: that doesn't seem too bad, except that £30 per month was a good salary back then.<sup>2</sup> His bride was Agnes Beyreuther, who used to work in Leipzig for the Senf brothers. Up until the First World War this duo used to issue annually fine stamp catalogues, the *Illustriertes Briefmarken Journal*,<sup>3</sup> along with handsome facsimiles of scarce stamps. Although one might frown on such an enterprise nowadays, at the time these products were never intended to defraud collectors, but to allow those of limited means to "fill" gaps in their collections. Accordingly, the items were always back-stamped "falsch" or "facsimile."<sup>4</sup>

One might wonder how Peter and Agnes met. As I say, Peter was also a serious philatelist, so one can imagine that he corresponded with the brothers Senf, and, when in Germany, perhaps visited their offices. On the other hand, one wonders what Agnes thought as she travelled from the coast to Umtali by lumbering train then wagon to the lonely outpost of Clifton Mine, exchanging the bustling elegance of Europe for the dusty expanses of African bush.

After their marriage, Peter continued for a couple of years to run various stores for Anglo-African, including those in Belingwe, Hartley,

---

<sup>1</sup> "Wedding Bills Paid by Peter Falk", in *The Pioneer*, vol. 3, *Early Days in Rhodesia* (1975), 103.

<sup>2</sup> See for example "Gwelo, a Typical Pioneer Town," in *The Pioneer*, vol. 3, "Early Days in Rhodesia" (1975), 91.

<sup>3</sup> <https://www.briefmarken.de/en/ueber-uns/geschichte>.

<sup>4</sup> [https://stampencyclopedia.miraeze.org/wiki/Gebr%C3%BCder\\_Senf](https://stampencyclopedia.miraeze.org/wiki/Gebr%C3%BCder_Senf).

and Que-Que, but in 1908 the couple decided to settle permanently in Gwelo,<sup>1</sup> where he built the first brick house in the town and, by the 1920s, had transitioned to being a successful florist and nurseryman. As a result, one can find covers either addressed to him as nurseryman or sent by him bearing his business handstamp [Illustration 11].<sup>2</sup> This business was active until at least 1937, based on such covers. You will notice, perhaps that he even used after his



Illustration 11

name the letters, F.R.H.S., meaning Fellow of the Royal Horticultural Society. Impressive, yes? Or maybe not. Until 1978, the title Fellow indicated no more than Member, and that the individual was duly paying the annual fee. The Society's records do not give membership lists far enough back, so I cannot discover when Peter became a Fellow, but in the early twentieth century it was not at all uncommon for gardeners

and nurserymen to join the society; nor was it unknown that various individuals would use the letters illegitimately in their advertisements! Apparently the society expended considerable energy trying to track down such malefactors, to issue cease-and-desist orders.<sup>3</sup> I would like to think Peter did not fall into that category.

<sup>1</sup> <https://www.rhodesianstudycircle.org.uk/peter-falk/>.

<sup>2</sup> Image from: <https://thedigitalphilatelist.com/southern-rhodesia-philately-peter-falk/>.

<sup>3</sup> Private communication, Jane Barron, Head of Patrons, plus information from SOME NOTES ON THE HISTORY OF THE WORD "FELLOW," distilled from Brent Elliott, *The Royal Horticultural Society: A History 1804-2004* (Chichester: Phillimore & Co., 2004).

You might also have spotted the name of the addressee: Miss M. Beyreuther. Surely a relative of his wife. I have not been able to unearth any information about her so far, not even her first name. However, a number of his covers to her have survived, including one which shows she made a visit to southern Africa in 1934 [Illustration 12];<sup>1</sup> presumably she travelled on from Beira to Gwelo to visit Peter. Most of these covers were registered: was he sending her money on a regular basis?

But the philately was no minor pastime, for Peter cheerfully ran for many years a separate business called the African Stamp Exchange [Illustration 13<sup>2</sup> shows a wrapper with the appropriate handstamp; sadly the postmark date is not clear]. This business was certainly



<sup>1</sup> Image from: [http://rhodesia.co.za/SOUTHERN\\_RHODESIA\\_21.html](http://rhodesia.co.za/SOUTHERN_RHODESIA_21.html), item SR3274.

<sup>2</sup> Image from: <https://www.rhodesianstudycircle.org.uk/peter-falk/>.

active in 1916, as evidenced by his advertisements in the *South African Stamp Collector*, which managed to produce nine issues during 1916-17,<sup>1</sup> before ceasing publication, perhaps a victim of the pressures of World War I.

Peter and Agnes had at least one child, Minna Hilda (29 March 1910 - 5 August 1996)<sup>2</sup> who married a Klimczak. Agnes died in 1932, but Peter continued as a stalwart plant-lover and citizen until he passed away on 12 September 1950. In that era, that date was a public holiday, celebrated as Pioneer Day in commemoration of the adventurers who had occupied the land that was to become Rhodesia: a fitting day for someone who set out for a life of adventure nearly sixty years earlier.

And the wrapper that started me off on this ramble? Well, on second thoughts, I am definitely going to keep it, even if I cannot decipher the BONC. And, if any reader can unequivocally convince me of the identity of the numeral, I should be thrilled.

## **Visit by Students from Paul Kane High School**

David Pattison  
pattisond(at)ymail.com

So we started the 30 under 30 by 2030 program in January. When we first hosted the Paul Kane students there were 5 members. A very enthusiastic visit at St. Joseph's last May. For our club, 30 students under 30 years of age by 2030 seemed an ambitious goal.

Then teacher advisor and ESC member Bob Hewitt started texting me with membership number updates of 18, 26, 33, and now 38.

---

<sup>1</sup>  
[https://www.southafricacollector.com/Pioneering\\_South\\_African\\_Philately.htm](https://www.southafricacollector.com/Pioneering_South_African_Philately.htm).

<sup>2</sup> In 1982 she was still listed in as a Full Member of the Pioneers Society to which her father Peter had belonged.

On 9 February ESC hosted 7 high school and a junior high school Paul Kane Stamp Club members. See the cover photo.



### **30 under 30: Jane Sodero Responds from the RPSC**

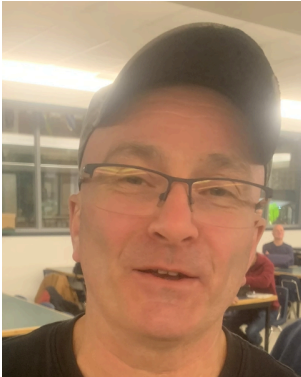
The 30 under 30 is an interesting idea.

In terms of assistance, the RPSC Foundation (<http://www.rpscfoundation.ca/>) can provide beginners kits which consist of a binder with vario pages and a selection of philatelic tools like tongs, magnifying glass etc. as well as a packet of stamps. For these just let us know how many you would like and a delivery address.

We also provide prizes for youth exhibitors - these are awarded by the judges and we have one prize per age group as outlined on the youth exhibit evaluation form (<https://rpsc.org/judges/RPSC%20Youth%20Exhibitor%20Feedback%20Form%202017.pdf>). The award consists of a ribbon and medal as well as a monetary prize of \$250.

We also have funding available for initiatives promoting philately to youth. The application form is at <http://www.rpscfoundation.ca/Funding%20Application%20-%20RPSC%20Foundation.pdf>.

### Winners, 9 February



Jeff Pacey won the door prize



John-Paul Himka won \$26 50/50

### Meeting Dates

The Edmonton Stamp Club meets Mondays at 6:00 p.m. in the cafeteria of St. Joseph High School, 10830-109 Street. Park to the north of the school and use the main entrance at the southeast corner of the school. For information about the club call 780-467-4825 or 780-437-1787.

#### 2026

9 and 16 March  
11 and 25 May

13 and 27 April  
8 and 22 June

### ESC SPRING SHOW

21-22 March  
Central Lion's Recreational Centre  
113 St & 111 Ave  
Fifty Years Edmonton Stamp Club Meetings  
at St. Joseph's High School  
Food Bank Donations  
Bring Money for Stamps  
Dealers, Exhibits, Junior Table, Talks