

EDMONTON STAMP CLUB BULLETIN

Volume 102, Number 3 March 2013 ISSN: 0046-1318

Mailing address: P.O. Box 399, Edmonton AB T5J 2J6

Web site: <http://www.edmontonstampclub.com>

Program of Events

2013 Spring National Stamp Show

March 22, 23, 24

West Edmonton Mall Conference Centre



Regular meetings: Mar 11 & 18, Apr 8 & 22, May 6 & 27
St. Joseph High School Cafeteria, 10830 - 109 Street, 6:30 pm

Editor: Alan Meech

The Edmonton Stamp Club

The Edmonton Stamp Club dates back to 1912. The Club is Life Chapter #6 of the Royal Philatelic Society of Canada and Chapter #680 of the American Philatelic Society.



The editor welcomes communications of all kinds—letters, comment and articles. These may be forwarded to Box 399, Edmonton, Alberta T5J 2J6 or ameech@telusplanet.net. ☐

2012-13 Board of Directors, etc.

Dykstra, Ed	Vice President	421-0930	eddykstra@shaw.ca
Ellis, David	Director	457-7491	dwellis@compusmart.ca
Friedenthal, Steven	Director	458-1233	sfriedenthal@shaw.ca
Kluchky, Ken	Director	472-2504	kluchky@shaw.ca
Kuester, Peter	President	451-0520	peju@shaw.ca
Lockau, Jim	Treasurer	467-4825	jlockau@shaw.ca
Muxlow, Edwin	Director	459-5944	---
Pacey, Jeff	Director	989-3491	jpacey@telus.net
Savage, Tom	Director	458-8332	tomsavage@shaw.ca
Schutte, Robert	Director; Membership	989-1260	rschutte@telusplanet.net
Spencer, Keith	Past President & NWFSC, RPSC liaison	437-1787	keithr.spencer@shaw.ca
Stein, Warren	Director	463-9881	warren.stein@worleyparsons.com
Tauber, Fred	Director	469-3034	fxtauber@shaw.ca
Meech, Alan	Bulletin Editor	466-9967	ameech@telusplanet.net
Bates, Pat	Archivist	434-9090	patbates@shaw.ca
Greenley, Linda	Junior Club	474-8084	---
Piercey, David	BNAPS liaison	437-2771	dpiercey@telus.net
Warren, Carol	Circuits Manager	962-1234	carwarren@shaw.ca

Edmonton, 1913

In 1913, the City of Edmonton was in a building boom. After adding South Edmonton (Strathcona) and North Edmonton, the city almost doubled in size. The CPR was expanding its network as well, which included building a bridge across the North Saskatchewan River, at the top of the valley. It would appropriately be named the High Level Bridge. The first Edmonton street car crossed the river as well. Not to be outdone, the newly formed Canadian Northern Railway's first coast-to-coast run train reached Edmonton in the same year. This railroad took over what had been the Grand Trunk Railroad. Later, it would become part of the Canadian National Railway

There were a few other railroad companies operating at that time in Edmonton. One was the Edmonton, Yukon and Pacific Railroad. Some of the paved trails that link Mill Creek and the LeMarchand Mansion are actually the rail bed of this railway. Two others were the Edmonton, Dunvegan and British Columbia Railroad and the Edmonton & Slave Lake Railroad. They later became the Northern Alberta Railroad, which is now part of the CNR empire.

The Edmonton Public Library was begun, with two locations—the downtown branch which has moved from its original location somewhere underneath what is now the AGT Tower, and is now the Stanley Milner Library.

(Continued on page 5)

KENSINGTON STAMPS & COINS
12912 - 127 Street, Edmonton AB T5L 1A9

Buy • Sell • Trade

Stocking stamps, stamp supplies, covers,
postcards, postage, etc.; also coins,
coin supplies and bullion.

Open Tuesday to Saturday, 10 am - 5:30 pm ☎ 780-451-4577



REGULAR PUBLIC AUCTIONS

WANTED IMMEDIATELY:

- Single items • CANADA, USA, Worldwide and foreign mint or used better single sets, errors, etc.
- Covers • CANADA and Worldwide individual covers, collections and accumulations including Postal History, unusual items including pre-1925 picture postcards.
- Collections • CANADA, USA, Foreign country collections and general Worldwide topical, etc.
- Accumulations • Collection remainders, odds and ends, sheets, Wholesale dealer stocks, quantity lots, postage, PERFINs, Cinderellas, etc.

Above items required immediately for outright purchase or inquire about our attractive consignment details. Illustrated catalogues upon request. Want lists filled.

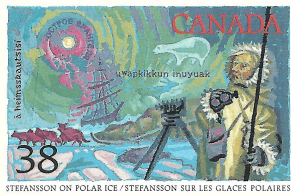
WILD ROSE PHILATELICS
Box 1422, Edmonton, AB T5J 2N5
(tel.) 1-780-437-1605 (fax) 1-780-430-0213
E-mail: wildrosephil@wildrosephilatelics.com
Web site: www.wildrosephilatelics.com

*Check out our web site and follow the links to
our current offerings on E-Bay!*

On the south side, the Strathcona Library building is still in use. Congratulations to the Edmonton Public Library for 100 years of valuable service to Edmonton.

Construction of the Prince of Wales Armoury was begun. From the timing, just one year before the outbreak of the First World War, it seems that the country was expecting war. The Armoury now houses the Edmonton Archives and the Loyal Edmonton Regimental Museum.

The Edmonton Gardens was the first indoor hockey arena built in Edmonton. It was originally built as the Edmonton Stock pavilion in 1913. The arena was built at the fair grounds so that it could be away from the city, and be used as a livestock pavilion alongside the stables and horse race track. The opening ceremonies were held on Christmas Day 1913, exactly nineteen years after Edmonton's first hockey game, which took the form of a game between two Stanley Cup finalists, the Edmonton Eskimos and the Edmonton Dominions. Over 2,000 fans attended. This arena became home of the Edmonton Eskimos (WCHL) between 1913 and 1927. Their previous arena, Thistle Rink, had just burned down that year. Northlands Park still exists on those same exhibition grounds.



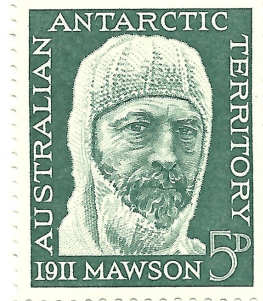
1913 was the year of the government of Canada's first exploration of the far north, the western Arctic. It was led by Canadian-born, U.S. citizen Vilhjalmur Stefansson, who was featured on a Canadian stamp, Scott #1236. One of the ships involved was the so-called "forgotten ship" the *Karluq*. It

left Victoria in summer 1913, was caught in the winter ice and drifted close to Siberia. Eleven crew lost their lives. The 17 survivors were guided to Alaska by an Inupiat hunter.

At the same time, the far south, Antarctica, was also being explored by an Australian explorer perhaps better known to stamp collectors, Sir Douglas Mawson, who is featured on Australian Antarctic Territory stamp, Scott #L7.

Two more Canadian stamp varieties were added to the much-loved Admiral series, two coils both perf 8 horizontally: 1 cent green (Scott #123) and 2 cent carmine (Scott #124).

Internationally, this was the time of the Second Balkan War, when Serbia, Greece,



Turkey and Romania ganged up on Bulgaria and reduced the size of that country greatly. The Ottoman Turks took control of the mostly Greek-inhabited city of Adrianople (now Edirne). This was celebrated by a set of Turkish stamps showing the large mosque of Selim in that city (Scott #251-253).

For Edmonton, 1913 was a year of prosperity and optimism. Now, 100 years later, we seem to be in the same frame of mind. There does not seem to be much anticipated peach now, either. Let us hope that peace prevails this time.



Ed Dykstra

PROFESSIONAL ACCOUNTANTS

COLIN PRESIZNIUK + ASSOCIATES

PROFESSIONAL ACCOUNTANTS

www.accountantscga.com

Over 25 Years Experience in Auditing, Tax & Business Counselling
For Personal and Corporate Tax, Not for Profit Charities & Small
Business

Northside (Head Office)

Colin Presizniuk MBA, CGA, FCCI, TEP

Brian Anderson, B.COM, CA

Rami Alherbawi, BSc, CGA

Luu Ho, BSc, BCom, CGA, CFE

#107, White Oaks Square, 12222 - 137 Avenue, Edmonton, AB T5L 4X5
780 448-7317

An Association of Independent Professional Accountants
UNTO THE LORD

The Judges

Joel Weiner (Chair, Edmonton AB)
 James (Jim) Taylor, (Calgary AB)
 Robert Lane, (St. Albert, AB)
 David Piercey, (Edmonton, AB)
 Norma Nielson (Apprentice, Calgary AB)



Joel Weiner

Joel Weiner was born in Montreal and has been collecting stamps since he was 9 years old. His diverse collecting interests extend from Canadian inkjet cancels and Centennial booklets to Palestine Mandate stamps and postal history, and all aspects of Great Britain stamps and cancels. He is a member of many philatelic organizations included RPSC, BNAPS, LM-APS, BAPIP, BPS, Perfin

Society, MGBPC, GBCC, etc.

He has several award-winning multi-frame and single frame exhibits of Palestine Mandate postal history and stamps, Great Britain one penny Machins and Canada Centennial booklets. He went to University at McGill, Cornell and Stanford University. He is married to Linda and they have two sons.

He is a Distinguished University Professor of Biochemistry at the University of Alberta and a Fellow of the Royal Society of Canada. □

MJR POSTCARDS & COVERS LTD


JOHN BUCCI
 EBAY ID: mjrpsc
 EMAIL: mjrcards@telusplanet.net
WEB SITE: www.mjrcardsandcovers.ca

PO BOX 36027 NW EDMONTON AB T5X 5V9
 780-456-7095 TOLL FREE 1-877-456-7095 CELL 780-996-7095



James R. (Jim) Taylor

Jim is a FIP accredited international philatelic judge and has served as a juror at exhibits at all levels in Canada, the United States, Europe and Australia. Collecting interests include Canada, Newfoundland, topicals and the French territory of St. Pierre and Miquelon. Exhibition awards include gold medals (Ottawa and Edmonton 2005, Adelaide 2006 and Quebec City 2008 national shows), large silver (Melbourne 1999 International), large vermeil (Malaga Spain 2006 International) and gold (Medellin, Colombia 2011 International).

He has published articles on Canadian, St. Pierre, thematic stamps and postal history in national publications. Jim edits the quarterly *St. Pierre & Miquelon Philatelic Journal*. His authoritative *St. Pierre & Miquelon Specialized Stamp Catalog* was awarded a gold medal (literature class) at the Chicagopex Show in 2000.

He is a member of the RPSC, RPSL, ALS (Life), BNAPS, SPMPs, F&CPS, CPS (Life), CCNY. Recently Jim was appointed as the RPSC International Liaison Officer and Chairman of the RPSC International Committee. He also serves on the Board of Directors of the Federación Interamericana de Filatelia (FIAF). □



Robert Lane

Robert Lane inherited an interest in Canadian and USA postal history from his father, John Lane LLD, who was also a BNAPS member. His personal interest in RPO (Railroad Post Office) history was developed over many years. His father was a CPR conductor.

This interest became manifested in numerous exhibits and in publications in refereed journals. The awards he has garnered and his publications and exhibits are too many to list, but include local, national and international awards.

Eventually, an interest in the process of exhibit-judging evolved. Such personal judging has been at the local and national level. □



Norma Nielson

Norma Nielson is a general collector of US and Canada, with a diverse range of interests. As an exhibitor, she has won gold medal at the national level and regional show grand award. Her primary exhibit is "The Story of Lloyd's: From Coffee to Commerce" which received its first gold medal at the Royal in 2007. It has been recognized as the top thematic exhibit on several occasions, and has three times received

the AAPE Creativity Award.

She is in the early stages of developing a single-frame exhibit entitled "Marc Chagall and his Stained Glass Windows" which has received silver medals on its only two outings.

She is an active member of the Calgary Philatelic Society, where she has made presentations to four society meetings and has organized and presented other activities at the Glenbow Museum and CALTAPEX. She has published several articles based upon her exhibits, one of which was "Using Genealogy Resources for Philatelic Research", appearing in the *American Philatelist*.

She is a member of the RPSC, ATA, CPS, Ships on Stamps study circle, and Women Exhibitors. □



David Piercey

David Piercey is a Canadian national level exhibitor and judge, and Chair of the RPSC Judging Program in Canada. He maintains a wide variety of collecting interests, including postal history of the Canadian Rocky Mountains, the Arctic, Newfoundland and Greenland. He exhibits gold medal on the early postal issues of Newfoundland, and a thematic exhibit on the "Fisheries of the North Atlantic", as well as a variety of one-frame

exhibits. He is a RPSC award winner in writing for "North of 60: The Postal History of the Canadian Northwest Territories", an article published in the *American Philatelist*.

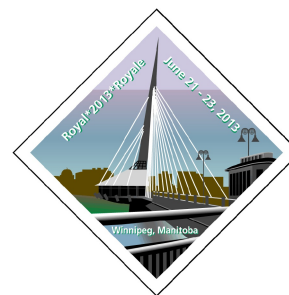
Society affiliations include the RPSC, BNAPS, PHSC, APS, CPSBG, ASPP, SCC, ATA and the FIPSG. He judges regularly at national level shows throughout Canada and the Pacific Northwest. □

E.S.C. Distinguished Service Award

Our Club's highest award, the Edmonton Stamp Club service award, will be presented on March 22nd at the wine and cheese reception. Members are eligible on the basis of service for the benefit of philately and for service to the club.

2012	Carol Warren	1995	John Powell
2011	Richard Barnes	1994	Deirdre McKay
2010	Bob Hyodo	1993	Edgar Mackay
2009	Joe Liusz	1992	Roman Zrobok
2008	Ed Dykstra	1991	Doris McKay
2007	George (Bud) Cutler	1990	Jan Roebroek
2006	Patricia Bates	1989	Michael Burrington
2005	John Attrell	1988	Stewart Kenyon
2004	Ernie Carlson	1987	Siegfried Osterwoldt
2003	Roy Hauer	1986	Kim Frandsen
2002	David Piercey	1985	Doris Church
2001	Jim Miller	1984	Ian Paterson
2000	Margaret Powell	1983	Keith Spencer
1999	Christopher Miller	1982	Bert Huffman
1998	Maurice Hampson	1981	Clark Bolton
1997	Alan Meech	1980	George Parkinson
1996	Edmund Harris		

□



Royal*2013*Royale

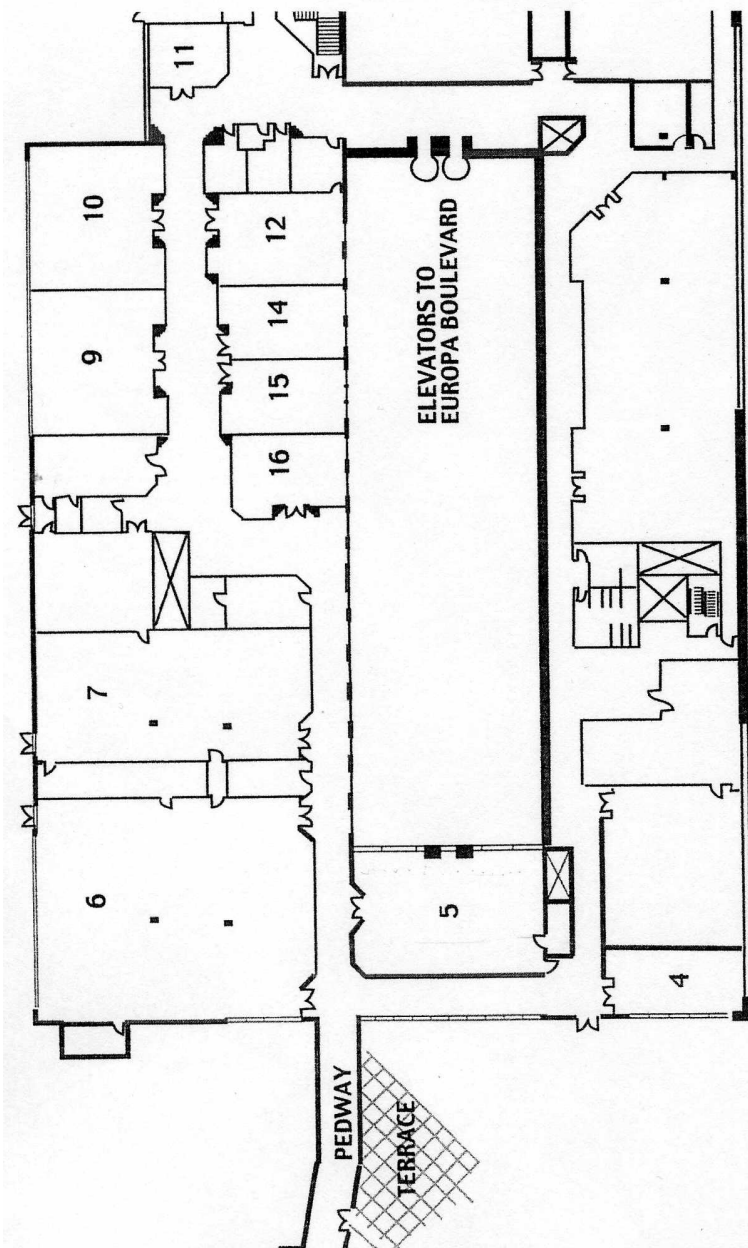
June 21-22-23, 2013

Hosted by the Winnipeg Philatelic Society

Including annual meeting of the Royal Philatelic Society of Canada, Scandinavian Collectors Club and Canadian Aerophilatelic Society.

Contacts: Al Wingate, show chair, al.wingate@shaw.ca; Michael Zacharias, registration, michaelpzacharias@shaw.ca, Robert Zacharias, exhibits, robertzacharias@shaw.ca. Don Bahaud, dealer chair, donest@mts.net.

Show Venue



Schedule of Events

Thursday, March 21

6:00 pm - 9:00 pm Set-up of Dealers' Bourse (Room 5) and Exhibits (Room 6). (Not open to general public)

Friday, March 22

9:00 am - 12:00 noon Set-up of Exhibits (exhibitors and helpers only)
Exhibition and Bourse Open to general public (Rooms 5 & 6)

8:00 pm Show closes

Saturday, March 23

10:00 am - 5:00 pm Exhibits and Bourse open to general public
Show closes

5:00 pm - 5:15 pm Wine and cheese reception and awards presentation (Room 7, Madeira Room)
Wine and cheese reception)

6:00 pm Program speaker, Ken Tingley, "The High Level Bridge" (Room 7)

6:30 - 7:30 pm Presentation of Awards

7:30 - 10:00 pm Exhibits walk-through

Sunday, March 24

8:30 - 10:00 am BNAPS Breakfast (ticket required, Room 10)
Guest speaker: Earle Covert

10:00 am Show open to general public

10:00 am-10:30 Seminar, Philatelic Specialists' Society regional meeting, (Room 10), PSS members only

10:30 am -12:00 Judging critique – exhibitors' feedback (Room 9)

1:00 pm - 2:00 pm Seminar, *Canada's Navy Ships*, Bill VanderStelt (Room 9)

2:30 pm - 3:30 pm Exhibiting and Judging panel, chair, Joel Weiner (Room 9)

4:00 pm Show closes, take down (volunteers welcome)

Awards to Be Presented

Edmonton Spring National Stamp Show, 2013

Royal Philatelic Society of Canada (RPSC)

National level medals:

Gold, Vermeil, Silver, Silver-Bronze and Bronze

Edmonton Stamp Club

- Grand Award
- Reserve Grand Award
- Best Post Card Exhibit
- Best One Frame Exhibit
- Junior Grand Award

Postal History Society of Canada

- Best BNA Postal History Exhibit
- Ritch Toop Best Military Postal History Exhibit

American Airmail Society

Canadian Aerophilatelic Society Award

British North America Philatelic Society

- Best BNA Exhibit
- Research Award
- Best 2 X 4 Exhibit
- Best BNA One-frame Exhibit

Elizabethan Study Group

- Corgi Award

American Association of Philatelic Exhibitors

- AAPE Gold Pin
- AAPE Creativity Award
- AAPE Novice Award
- AAPE Title Page Award
- Women Exhibitor Award

American Philatelic Society

- Medal of Excellence: pre-1900 material
- Medal of Excellence: 1900-1940 material
- Medal of Excellence: 1940-1980 material
- Medal of Excellence: post-1980 material
- Research Award

American Topical Association

- ATA first Award (best thematic)
- ATA second Award

WEST EDMONTON COIN AND STAMP

West Edmonton Mall

We have a great selection of supplies, catalogues, supplements and reference material. We also have a large selection of world wide postcards, covers and first day covers, and an extensive selection of mint and used stamps from A to Z. There are always new finds in our 5¢ boxes.

We buy and sell stamps, coins, gold, silver and other collectibles. See our friendly and knowledgeable staff to meet your collecting needs. We also do mail orders.

10% discount on regular priced *supplies* to E.S.C. members.

OPEN 7 DAYS A WEEK

Continuing special – 50% off all covers

We are Direct Distributors for the Royal Canadian Mint

Fax. 780-486-5243 Tel. 780-444-1156



Exhibits

Category and Frame #

Court of Honor

Joel Weiner (AB) # 1 - 10
1 Penny Machin Stamp

The development of British definitives during the decimal period 1970-date. The exhibit highlights developments in printing technology, security features and customer convenience through changes of paper, gum, tagging, perforation, color and format illustrated with the one penny stamp.

Jim Taylor (AB) # 11- 15
St. Pierre & Miquelon: 1932-1946 Postal History

The exhibit is organized according to destinations, each having different postal rates – Domestic, Canada, Foreign. Frequent rate changes, wartime conditions and confusing airmail surtax charges made for postal complexity.

Norma Nielson (AB) # 16 - 20
The Story of Lloyd's: From Coffee to Commerce

This exhibit highlights the 300+ year history of the world famous insurance market, interspersing details about the interaction of Lloyd's with postal authorities along with more conventional historical details.

Competitive Exhibits

Ed Dykstra (AB) (One Frame) # 21
Turkey 1918-1923

Stamps and covers used in Turkey, from the end of the old Ottoman Empire to the modern Republic.

Brian Plain (BC) (One Frame) # 22
The Rise and Fall of the Dead Letter Office in Victoria, B.C.

Rob McGuiness (BC) (Display) # 23-24
Ink Blotter Philately

A study showing the connection between ink blotters and philately.

Earle Covert (AB) (Postal History) # 25-34
Not All Canadian Mail Gets Through Uneventfully

Shows mail delayed, treated differently and rerouted by actions of the Post Offices and mailer.

Matthew Gaiser (AB) (Youth, age 13-15) # 35
Canadian Philatelic Youth Issue of 1982

Jan Brookes (AB) (One-frame) # 36
Mediterranean Mouflon, The First Stamp Showing the World Wildlife Fund Logo

This exhibit is a comprehensive study of the French stamp issued October 8, 1969 for the World Wildlife Fund including production material and rate usages.

Jean-Jacques Tillard (SPM) (Traditional) # 37-44
Saint-Pierre et Miquelon, Ses surcharges au 19ième siècle

Unique collection qui réunit toutes les raretés et variétés surchargés avant 1900.

Kevin O'Reilly (NT) (Postal) # 45-48
Sovereignty, Substances, Small Centres and Subs: Closed Post Offices of the Northwest Territories

All closed post offices in the NWT are shown using representative or unusual pieces, organized as to the purpose for each post office.

Donna Trathen (AB) (Picture Postcard) # 49-53
The Lipizzan Horses of the Spanish Riding School of Vienna

This thematic post card exhibit will show the history of the Lipizzan horse during their first 400 years of existence and how they interact with man.

Kelly Liusz Moser (AB) (Postal) # 54-59
Christmas in Canada
 A look at the evolution of Canadian Christmas on various postal items and stamps starting in the late 19th century.

Earle Covert (AB) (One Frame) # 60
Kiosk Stamps and Labels
 Canada is trying to utilize self-service kiosks.

Larry Margetish (BC) (Traditional) # 61-68
Canada's Caricature and Landscape Issues

David Bartlet (AB) (Picture Postcard) # 69-72
Winnipeg Stampede – 100 Years – 1913
 The Winnipeg Stampede was held 9-16 August 1913 and this exhibit uses Real Photo Post cards to show the events, men, women and Native Indians in the stampede.

Steven Friedenthal (AB) (Postal) # 73-79
Machine Advertising Cancels of Czechoslovakia: The First Republic Period 1920-1933

Penny Borrowman (AB) (Thematic) # 80-84
Canada's Birds Fly the Mail
 A look at the birds of Canada on domestic and international philatelic material, showing habitat, range, diversity and beauty.

Earle Covert (AB) (Postal Stationery) # 85-88
Certified Mail
 Introduced in 1973, replaced by Special Letter in 1989. Contract Certified, Special Order Certified, Certified Expresspost and Expresspost Certified have been used in turn.

Ian Wright (AB) (Traditional) # 89-93
Great Britain One Penny Red 1854-1856.
 A study of plates in transition.

Gray Scrimgeour (BC) (Picture Postcard) # 94-96

Post Cards of Lewis Rice
 Lewis Rice of Moose Jaw was a major photographer and publisher of picture post cards of Saskatchewan and other Western Canada.

Earle Covert (AB) (Traditional Revenue) # 97-106
Tobacco Duty Paid – 1973 to 2011
 From 1973 to 2011 the tobacco manufacturers or importers had to supply their own duty paid stamps. We show the stamps and tear strips.

Jan Brookes (AB) (Picture Post Card) # 107-112
Of Men and Giant Pandas
 This exhibit is about the entrancing story of men and Giant Pandas. A chronicle of the discovery of giant pandas and discussion of giant pandas as an animal.

Al Hurst (ON) (Postal History) # 113-120
Mail in the County of Northumberland, England 1604-1847
 Exhibit includes rare and scarce letters. Emphasis is on the GPO. Several significant non letter items are displayed.

CANADA COVERS AND STAMPS



HAROLD KELLETT

EMAIL: leanne@myaccess.ca

WEB SITE: www.canadacoversandstamps.ca





PO BOX 8 DELISLE SK S0L 0P0 306-493-2981

Participating Dealers

We welcome the following dealers and invite your patronage.

R. D. Miner Philatelics
83 Woodgreen Drive SW
Calgary, AB T2W 4G6
phone (403) 251-6475; fax (403) 251-7370
E-mail: rdminer@telus.net
Dwayne Miner, Janice Brookes, Joanne Smith
Specializing in Canada, topicals, Commonwealth

Wayne Dods
420 Christelton Avenue
Kelowna, BC V1Y 5H7
phone (403) 861-1518
e-mail: Waynedods@shaw.ca
Wayne M. Dods
Specializing in Great Britain, British Commonwealth, Worldwide

Royal William Stamps Ltd.
Box 69058 Skyview Postal Outlet
Edmonton, AB T5L 5E0
phone (780) 453-2700
fax; (780) 453-2700
e-mail: royalwil@compusmart.ab.ca
Gus Graham, Marguerite Graham, Bob Graham, Marcel Paquin,
Greg White
Specializing in Canada, Great Britain

Zatka Philately Ltd.
P.O. Box 1181, Stn. M
Calgary, AB T2P 2K9
phone (403) 239-8659
e-mail: zatkaphil@shaw.ca
Mirko Zatka, Martin Zatka
Specializing in modern Canada, Scandinavia

Deveney Collectibles
Box 644
Penticton, BC V2A 6J9
phone: (250) 492-6516
fax; (250) 481-6516
e-mail: wselit@shaw.ca
Dave Deveney, Kayle Deveney
Specializing in revenues, precancels, early Canada

J. Garvey & Sons
10403 - 140 Street
Edmonton, AB T4N 2L8
phone: (780) 424-2520
e-mail: info@garveyandsons.com
Les Garvey, Trixie Garvey, Edgar MacKay
Worldwide stamps

Stamp Gallery
Box 22103, Banker's Hall P.O.
Calgary, AB T2P 4J5
phone: (403) 284-4124
e-mail: ivrudyk@shaw.ca
Ihor Rudyk
Worldwide stamps and postal history

The Stamp Collection Connection
Suite 2029, 61 Broadway Boulevard
Sherwood Park, AB T8H 2C1
phone: (780) 999-8299
e-mail: jmson@telus.net
Jim Miller, Bud Cutler, Barry Jonas
Specializing in Canada, Europe, Newfoundland, worldwide

Luciano Bassetto
30 N. Kootenay Street
Vancouver, BC V5K 3P7
phone: (604) 291-0100
e-mail: bellacatering@hotmail.com
Luciano Bassetto, Peter Jansen

MJR Postcards & Covers
 P.O. Box 36027, Castledown P.O.
 Edmonton, AB TXV 5V9
 phone: (780) 456-7095
 toll-free: 1-877-446-7095
 fax: (780) 478-5995
 e-mail: mjrcards@telusplanet.net
 web site: www.mjrcardsandcovers.ca
 John Bucci, Simone Bucci

Doug Kendig
 805 Bolton Road
 Tappen, BC V0E 2X3

Railside Philatelic Services
 Peter Fleck
 Red Deer, AB
 phone: (403) 348-9916
 E-mail: pcf@telus.net

Romania Levant

Romania had a long history of commerce with the Ottoman Empire. In 1896 Romania—hoping to set up a foreign post office in Constantinople—experimented with issuing postage for use on Romanian mail ships travelling to and from Constantinople and other Black Sea ports. It was a short-lived experiment, lasting only from March to May. Opposition from the Austrian Post Office denied Romania permission to set up a Foreign Post Office at Constantinople.

Two sets of three stamps each were produced, both of which used the same current Romanian stamps with hand-stamped overprints of 10 pa on blue 5b, 20 pa on the emerald 10 b, and 1 pia on the violet 25b. The difference between the two sets was that one was hand-stamped with a black surcharge (Fig. 1) while the other used a violet surcharge.



Two different post cards were also issued in 1896. The 1883 10 b card was used to make two different Levant 20 pa post cards. Again the difference is in the colour of the hand stamp. There is a black hand stamp and a purple hand stamp (Fig. 2) I found it surprising that the black overprinted stamps catalogue at more than double the violet hand stamped cards while the black hand-stamped postcard catalogues at ten times the purple hand-stamped post card.

At the end of World War I, Romania was allowed to set up its own post offices in the Ottoman Empire. In 1919 a five stamp set was produced using the current Romanian stamps in values 5 b to 40 b, and there was a 5b postal tax stamp. To designate their use in the Ottoman Empire, these stamps received a circular overprint. “Post Romania Constantinopol” was printed within the circle and in the centre of the circle was the date 1919, and a winged crest with P.T. on either side of the crest. These are the only cards listed in the Higgins & Gage catalogue.



I have two different hand stamps on my 1896 stamps. Again, the possibility of forgeries does exist, even though Scott does not print such a warning. Does anyone have any additional information particularly referring to genuine overprints and possible forgeries? □

Richard T. Barnes

2013 Coming Events

Apr 5 - 7	Lakeshore Stamp Club's 50 th anniversary exhibition, Sarto Desnoyers Community Centre, Dorval, QC. For details contact François Brisse, e-mail fbrisse@sympatico.ca
May 4 - 5	ORAPEX, Ottawa's national level stamp show, at the RA Curling Centre. General information is available from Stéphane Cloutier at (613) 741-1005 or see web site at www.orapex.ca .
Jun 21-22	Royal2013Royale, hosted by Winnipeg Philatelic Society. Other societies attending are Scandinavian Collectors Club and the Canadian Aerophilatelic Society. Contact Al Wingate for information: al.wingate@shaw.ca

2013 Meeting Dates

The Edmonton Stamp Club meets Mondays at 6:30 pm in the cafeteria of St. Joseph High School, 10830 - 109 Street. Because of recent concerns about school security, entrance to the school is from the main doors on the southeast corner of the building. Or, take your luck and park to the north of the school and use the western entrance on the north facade, where you might find a Club member waiting to open the doors for members. For information about the regular club call 451-0420 or 437-1787; for the junior club, phone Linda at 913-1244.

March 11 & 18, April 8 & 22, May 6 & 27, June 10
Summer Meeting, July 29, Chateau Louis Conference Centre

Fall Stamp Market, September 21 and 22
2014 Spring Stamp Show, March 20 - 23, 2014

CANADA • BNA

Choice Early Classics to Modern Varieties



Visit us on the web at:

www.saskatoonstamp.com

Our web site offers an **on-line shopping cart** where you can view & order from our large stock of Canadian & BNA stamps & literature.



WANTED CANADIAN ERRORS

CANADIAN ERRORS — BOUGHT * SOLD * TRADED

❖ IMPERFORATES ❖ MISSING COLOURS ❖ INVERTS ❖ MISPERFS ❖
❖ COLOUR SHIFTS ❖ PRINTED ON GUM ❖ BETTER VARIETIES ❖

FREE ON REQUEST:

*Our current private treaty catalogue of Canadian and BNA Stamps.
Call, Fax, E-mail or Write*

Internationally Recognized as a Leading Dealer in Canadian Errors and Varieties

SASKATOON STAMP CENTRE

PO Box 1870, Saskatoon, SK S7K 3S2
Call TOLL FREE 1-800-205-8814 in North America
Phone: (306) 931-6633 Fax: (306) 975-3728

E-mail: ssc@saskatoonstamp.com Web site: www.saskatoonstamp.com

